

Please read and understand this instruction manual thoroughly before using this product.

For Mini-Z MB-010VE Series models

Mini-Z Buggy VE setup Manager Manual



Instruction Manual

This product is used to connect Mini-Z MB-010VE series models to a personal computer, and it can adjust Brake and throttle settings with a special software program .

* Default setting is standard.

●System Requirements

- Computer with Microsoft Windows XP or Windows Vista or Windows 7 or Windows 8 or Windows 8.1 and at least one available USB port (1.1 or 2.0)
- Microsoft Windows XP, Windows Vista, Windows 7, Windows 8 and Windows 8.1 (proper function cannot be guaranteed if using with an emulator)
- Internet connection for downloading the software.

* Microsoft Windows XP, Windows Vista, Windows 7, Windows 8, Windows 8.1 are the registered trademarks of Microsoft in the U.S. and other countries.

* KYOSHO CORPORATION accepts no responsibility for any consequences resulting from the use of this product. By using this product the user accepts full responsibility.

●Before Use

- KYOSHO CORPORATION accepts no responsibility for any consequences resulting from the use of this product. By using this product the user accepts full responsibility.
- Even if KYOSHO CORPORATION receives a report relating to malfunction or other issues, it gives no undertaking to repair, modify or add functionality to the product.
- Company or organization names, and product names referred to in this instruction manual are the trademarks or registered trademarks of the respective companies or organizations.
- When used with Mini-Z ASF 2.4GHz series models, this software is provided at no charge. However, the copyright of this software is owned by Scorpion Power System Corporation and therefore unauthorized copying, sharing or reverse engineering or similar activities are prohibited.
- Modifications may be made due to improved display screen performance.

●Required for Operation

- Mini-Z MB-010VE chassis



- Brushless setup cable (No.82081)



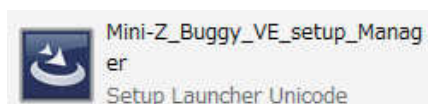
●Preparations required before use

◆Downloading the Software and USB driver

●NOTICE

- The software is subject to change for upgrade work. Download the latest software with referring “How to download” on the next page.

◇Special Software Program and USB driver



Access below URL and download the software on your computer.
After downloaded, please check above both software is in same folder.

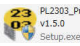
- Mini-Z Buggy support page
<http://www.kyosho.com/mini-z-buggy-support/>

(Above URL may be subject to change.)

◆Install the USB driver

(This enables the Brushless setup cable to work on your computer)

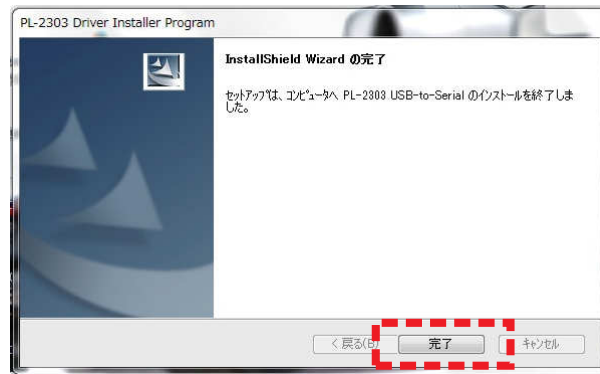
- Plug the Brushless setup cable into the USB port on the computer. The USB adapter may not function properly if using a USB hub or a USB extension cable.
- If there is more than one USB port on your computer, try to use the same USB port for the USB Adapter each time. Using a different port may require the software driver to be re-installed.
- These instructions relate to standard computer screen settings and may differ according to your computer setup or customized screen settings.

1. After the download double click the software icon () on downloaded folder.
 - Install window is displayed, click Next “ ”.



2. Finish the install as display, install will be success when the below displayed .

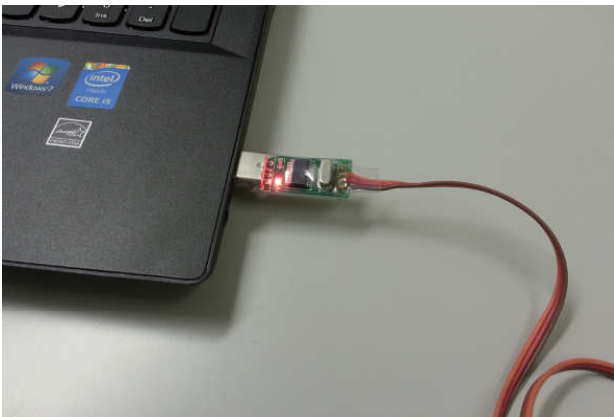
- The installation may take a few minutes to finish. After installation is complete, the screen shown below is displayed.



◆ Confirm COM port setting

(Checking the Brushless setup cable has been properly installed)

1. Connect the VE setup cable to the USB Adapter.

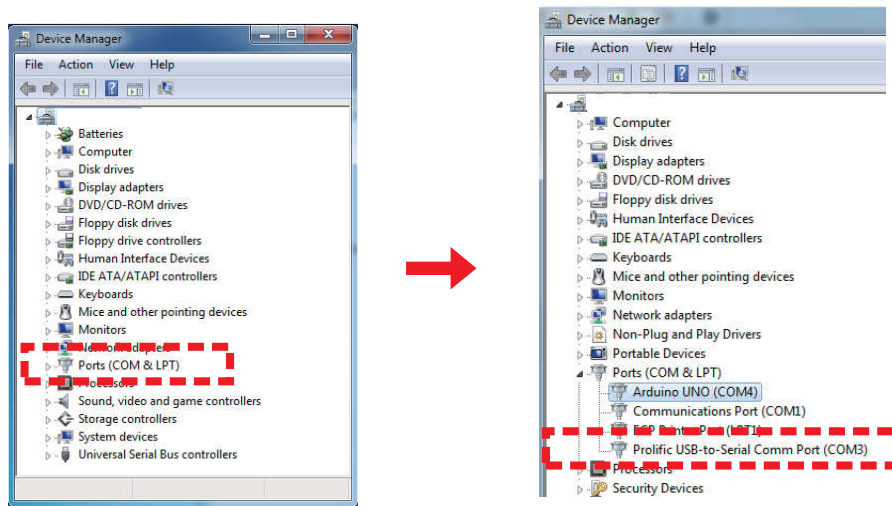


2. Click : Start > Control Panel > Hardware & Sound > Device Manager and then Device Manager window is displayed.

- Depending on your computer's settings, some option may not be displayed.



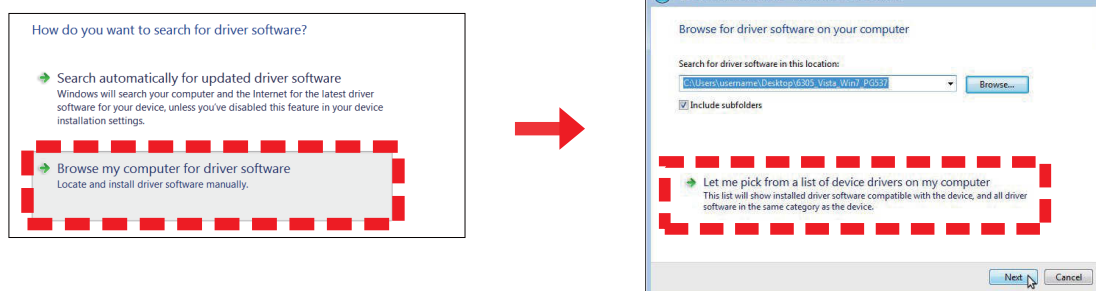
3. Double-click 'Port' and confirm that 'Prolific USB-to-Serial Comm Port (COM"X")' is displayed.



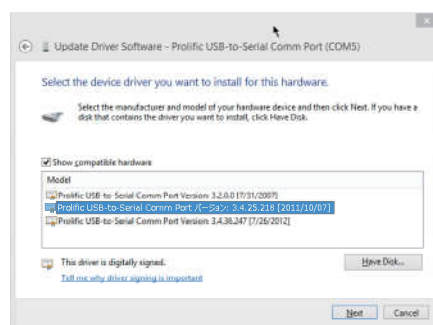
- 'X' indicates the number that the software will use. Write it down as it will need to be referred to later. These instructions use the number 3 as an example for 'X', but your computer or USB port may assign a different number. Make sure to check the port number used on your computer.
- If the Brushless setup cable is not installed correctly, it will not be displayed. In this case, repeat the 'Brushless setup cable connection and driver installation'.

● If the USB driver is still not recognized after redoing “Connecting the VE Setup cable and reinstalling the driver,” follow the steps below to select the appropriate driver software.

1. Open the device manager after completing the driver installation.
Open “Ports (COM&LPT),” and you’ ll find Prolific USB-to-Serial Comm Port (COM “X”) showing an error.
Note: “X” depends on your PC or the USB port being used.
2. Right click on it and choose “Update Driver” in the popup menu.
3. Click “Browse my computer for driver software” and then click “Let me pick from a list of device drivers on my computer.”

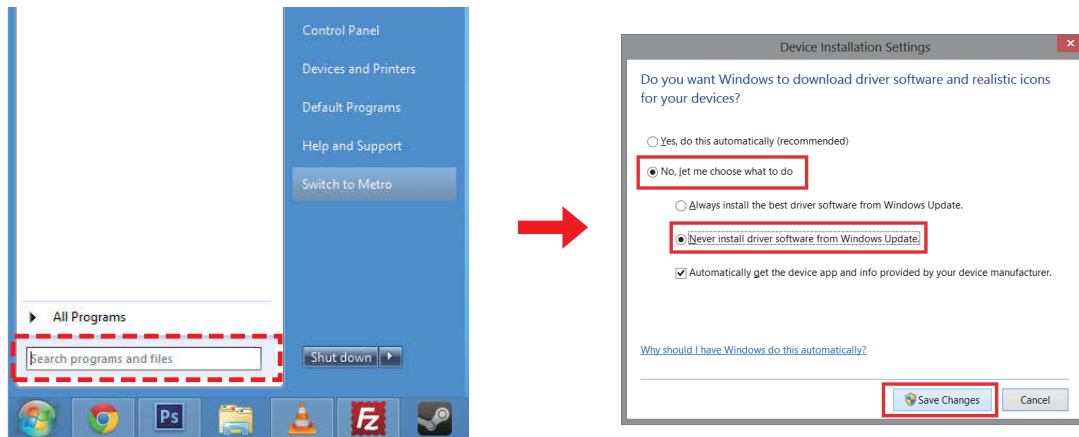


4. Select “Prolific USB-to-Serial Comm Port Version 3.4.25.218(2011/10/7)” in the list and click “Next.”




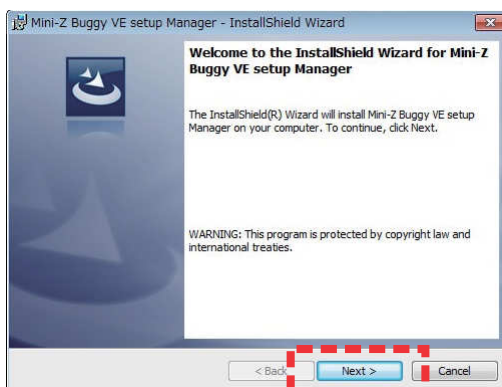
5. The driver will be updated (rolled back).
6. Make sure that the error is disappeared in the device manager.
7. Change the device installation settings so that the device driver will not be updated automatically.

Type “device installation settings” in the search box in the Start menu, and select No, let me choose what to do, select Never install driver software from Windows update, and then click Save Changes in the Device Installation Settings window.

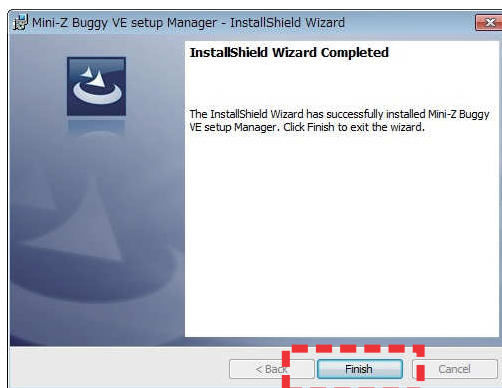


◆ Install the Special Software Program

1. After the download double click the software icon () on downloaded folder.
 - Install window is displayed, click Next ” .



2. Finish the install as display, install will be success when the below displayed .
 - The installation may take a few minutes to finish. After installation is complete, the screen shown below is displayed.

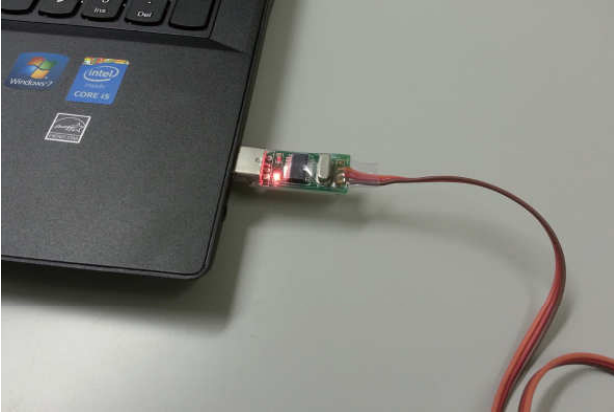


3. Confirm that the saved folder is indicated by the icon below.



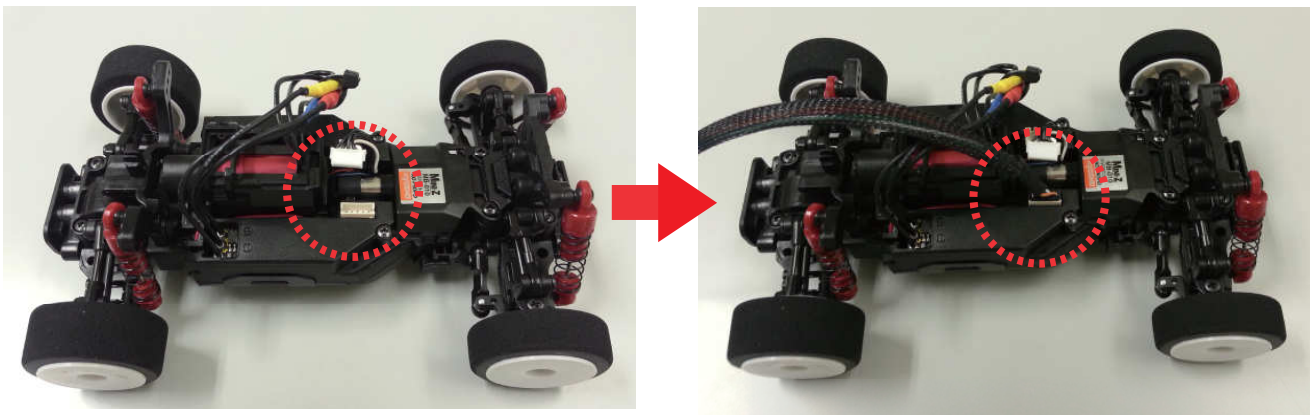
● How to connect the model to the computer and use the software

1. Connect the VE setup cable to the USB Adapter.



2. Pull out the connector from the socket on the ESC PCB, and connect the VE setup cable to the socket.

- The connectors are designed to prevent reverse connection. If connection seems too tight, disconnect and check the direction of the connectors, then re-connect.



3. Turn ON.



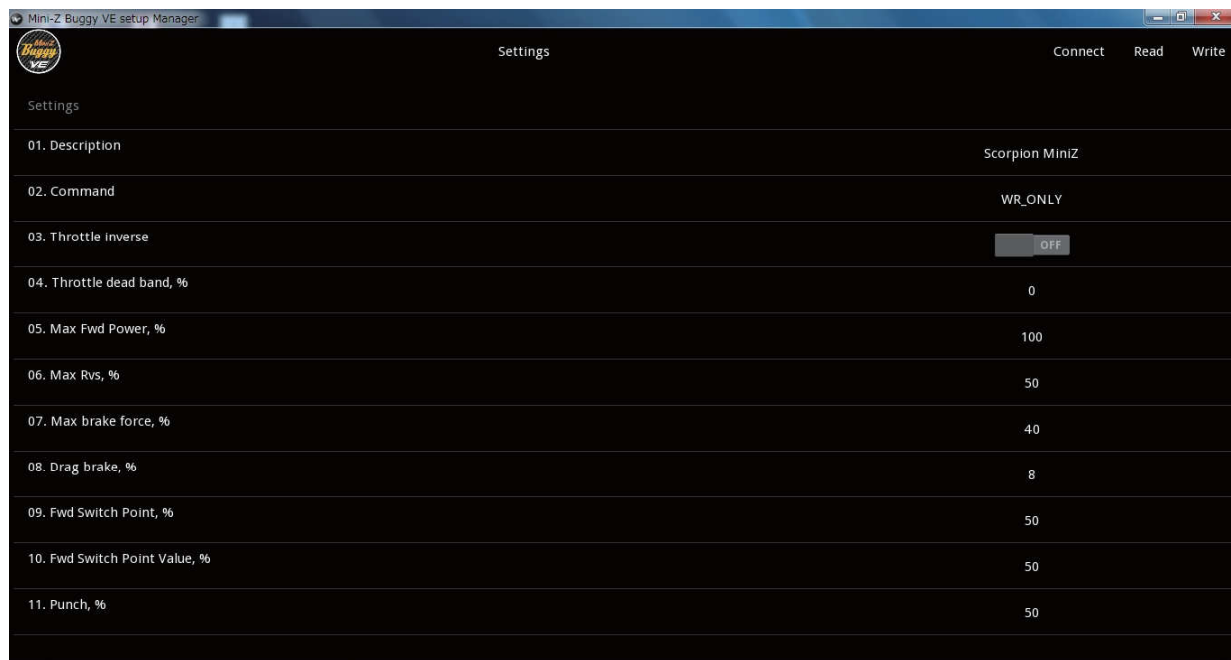
4. Start the software program that was installed.
Double-click "Mini-Z Buggy setup Manager".



● Explanation of Software Program Interface

When each function of the software is used, the following window is displayed.

- The screen displayed below is the default setting.



◆ Button Names and Functions

Write

Write

The connection settings displayed now will be saved on the chassis. As these settings will overwrite the existing settings, saving the existing settings from the chassis is recommended.

Read

Read

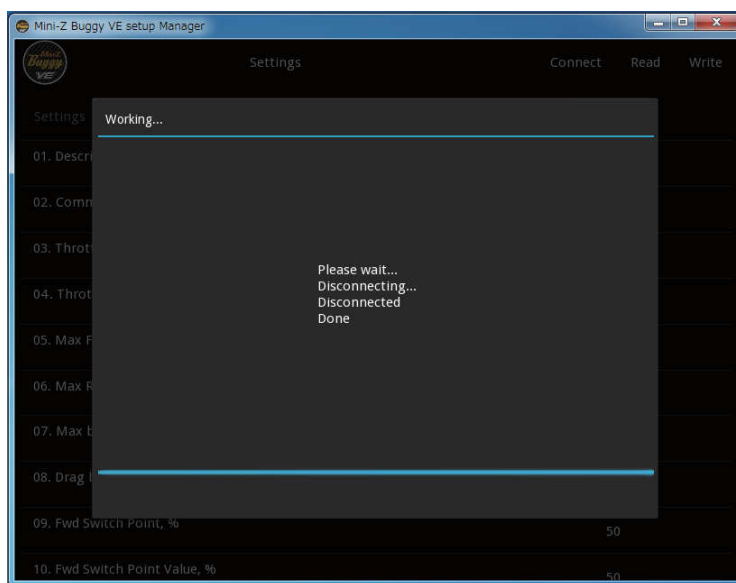
Saves the setting data from the chassis to the computer. Please note that saving data will overwrite any data that is displayed on the screen.

Connect

Connection/Disconnection

Connect or disconnect the chassis to/from the software.

Note: Before physically disconnecting the VE setup cable from the chassis, always click on the "Connect" button, and make sure that "Disconnected" is shown on the screen.



◆ Parameter names and their functions

• Description

You can register the description of the chassis.

- **Command**

WR_ONLY : Change will become effective when the chassis is turned off and on after disconnecting the chassis from the software.

WR_UPD : Change will become effective immediately after disconnecting the chassis from the software.

CLR_TO_DEF : Restores each setup parameter to the factory default value.

- **Throttle inverse**

Reverses the throttle forward/reverse operation.

- **Throttle dead band**

Configures the throttle dead band. The smaller the value is, the more sensitively the throttle reacts to your control around the neutral position.

- **Max Fwd Power**

Configures the output to the brushless motor connected. The bigger the value is, the higher the output and the top speed will be.

- **Max Rvs**

Configures the output of the reverse side. The bigger the value is, the higher the output and the top speed will be.

- **Max brake force**

Configures the maximum brake force. The higher the value is, the higher the brake force and the shorter the braking distance will be.

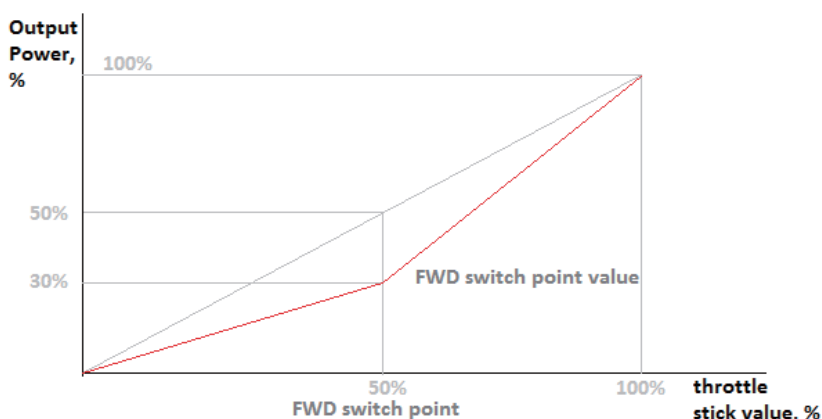
- **Drag brake**

Configures the drag brake, which is applied when the throttle trigger is released. The bigger the value is, the higher the drag braking force will be. Drag brake is useful to adjust the turn-in characteristics and to control the posture in the air during jumps.

- **Fwd Switch Point**

- **Fwd Switch Point Value**

This function modifies the motor output related to a throttle trigger position. It is similar to exponential and motor output characteristics can be adjusted to your liking.



- **Punch**

Adjusts the acceleration performance. The bigger the value is, the better the acceleration will be. However, it can result in wheel spin on low grip conditions, so it should be adjusted in accordance with the running conditions.